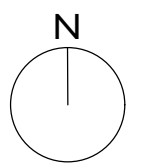
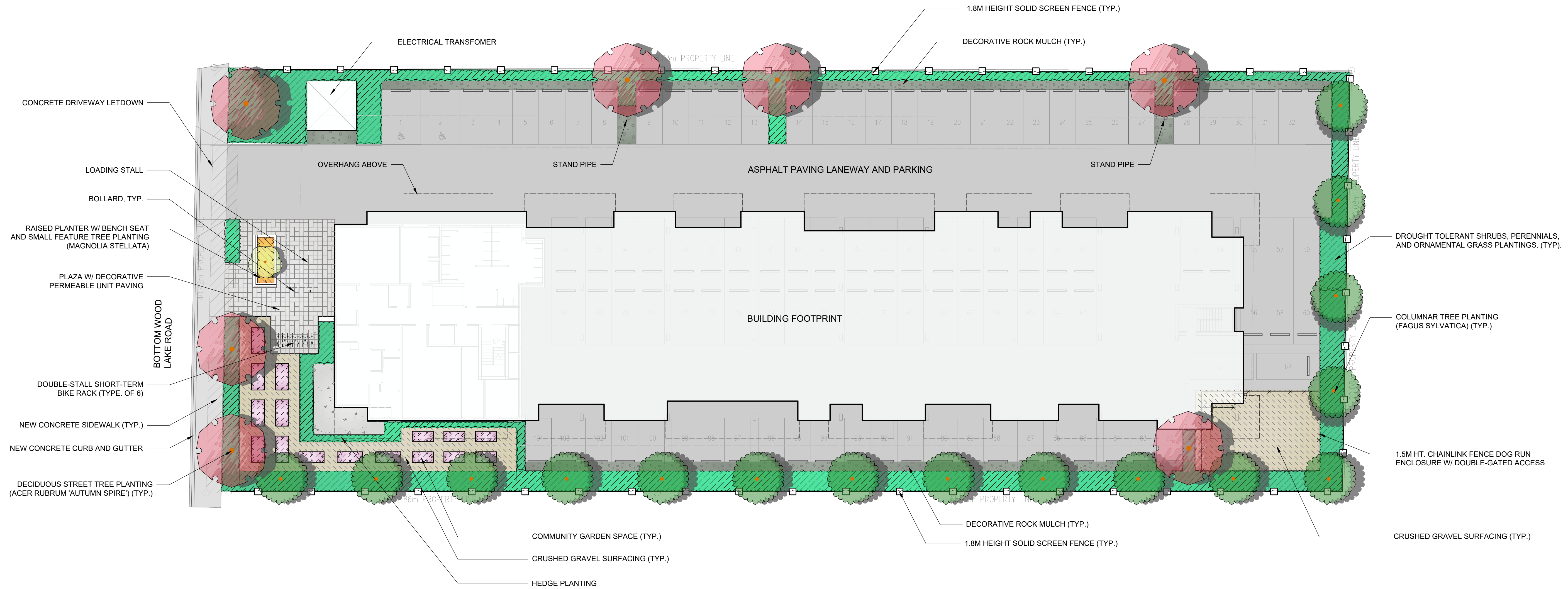


1:200 0 2m 4 6 8 10 12 14 16 18 20 22 24 26 28 30



SEAL

CONSULTANT

PROJECT TITLE

BOTTOM WOOD LAKE MULTI FAMILY

11551 Bottom Wood Lake Road
Lake Country, BC

DRAWING TITLE

LANDSCAPE PLAN

ISSUED FOR / REVISION

1	22 Nov. 2022	Issued for Development Permit
2	28 Nov. 2024	Re-Issued for Development Permit
3		
4		
5		

PROJECT NO	241101
DESIGN BY	AM / KM
DRAWN BY	AM
CHECKED BY	AM
DATE	28 November 2024
SCALE	1:200
PAGE SIZE	24"x36"

DRAWING NUMBER

LS-001

NOT FOR CONSTRUCTION

NOTES

1. PLANT MATERIAL AND CONSTRUCTION METHODS SHALL MEET OR EXCEED CNLA STANDARDS.
2. ALL SOFT LANDSCAPE AREAS SHALL BE WATERED BY A FULLY AUTOMATIC TIMED UNDERGROUND IRRIGATION SYSTEM.
3. TREE AND SHRUB BEDS TO BE DRESSED IN A MINIMUM 75mm BLACK WOOD MULCH, AS SHOWN IN PLANS. DO NOT PLACE WEED MAT UNDERNEATH TREE AND SHRUB BEDS.
4. TREE AND SHRUB BEDS TO RECEIVE A MINIMUM 300mm DEPTH TOPSOIL PLACEMENT.
5. TURF AREAS FROM SOD SHALL BE NO. 1 GRADE GROWN FROM CERTIFIED SEED OF IMPROVED CULTIVARS REGISTERED FOR SALE IN B.C. AND SHALL BE TOLERANT OF DROUGHT CONDITIONS. A MINIMUM OF 150mm DEPTH OF GROWING MEDIUM IS REQUIRED BENEATH TURF AREAS. TURF AREAS SHALL MEET EXISTING GRADES AND HARD SURFACES FLUSH.
6. SITE GRADING AND DRAINAGE WILL ENSURE THAT ALL STRUCTURES HAVE POSITIVE DRAINAGE, AND THAT NO WATER OR LOOSE IMPEDIMENTS WILL BE DISCHARGED FROM THE LOT ONTO ADJACENT PUBLIC, COMMON, OR PRIVATE PROPERTIES.

PLANT LIST

BOTANICAL NAME	COMMON NAME	QTY	SIZE/SPACING & REMARKS
TREES			
ACER RUBRUM 'SCARSEN'	SCARLET SENTINEL MAPLE	7	6m CAL.
FAGUS SYLVATICA 'FASTIGIATA'	FASTIGATE BEECH	16	6m CAL.
MAGNOLIA STELLATA 'SUSAN'	SUSAN MAGNOLIA	1	6m CAL.
SHRUBS			
BERBERIS THUNBERGII 'CENTRY'	ROYAL BURGUNDY BARBERRY	35	#02 CONT. /1.0M O.C. SPACING
ELJONYMIUS ALATUS 'COMPACTA'	DWARF WINGED BURNING BUSH	11	#02 CONT. /1.8M O.C. SPACING
PHILADELPHUS LEWISII 'WATERTON'	WATERTON MOCKORANGE	11	#02 CONT. /1.8M O.C. SPACING
PHYSOCARPUS 'PULIFOLIUS 'DART'S GOLD'	DART'S GOLD NINEBARK	16	#02 CONT. /1.5M O.C. SPACING
RHUS AROMATICA 'GRO LOW'	GRO-LOW FRAGRANT SUMAC	9	#02 CONT. /1.2M O.C. SPACING
ROSA X 'RADRAZZ'	KNOCK OUT RED ROSE	16	#02 CONT. /1.5M O.C. SPACING
SYRINGA MEYERI 'PALIBIN'	LILAC	16	#02 CONT. /1.5M O.C. SPACING
PERENNIALS & GRASSES			
ACHILLEA 'GOLD PLATE'	GOLD PLATE YARROW	26	#01 CONT. /0.9M O.C. SPACING
ASTER FRIKARTII 'MONCH'	FRIKART'S ASTER	26	#01 CONT. /0.9M O.C. SPACING
CALAMAGROSIS ACUTIFLORA 'KARL FOERSTER'	KARL FOERSTER FEATHER REED GRASS	15	#01 CONT. /1.2M O.C. SPACING
HEMEROCALLIS 'RUBY STELLA'	RUBY STELLA DAYLILY	26	#01 CONT. /0.9M O.C. SPACING
LAVANDULA ANGSTIFOLIA 'HIDCOTE'	HIDCOTE ENGLISH LAVENDER	15	#01 CONT. /1.2M O.C. SPACING
PENNISETUM ALOPECUROIDES	FOUNTAIN GRASS	15	#01 CONT. /1.2M O.C. SPACING
PEROVSKIA ATRIPICIFOLIA	RUSSIAN SAGE	15	#01 CONT. /1.2M O.C. SPACING
RUIDBECKIA FULGIDA 'GOLDSTURM'	GOLDSTURM CONEFLOWER	21	#01 CONT. /1.0M O.C. SPACING
SALVIA NEMOROSA 'MAY NIGHT'	MAY NIGHT MEADOW SAGE	15	#01 CONT. /1.2M O.C. SPACING
SEDUM SPECTABILE 'AUTUMN JOY'	AUTUMN JOY STONECROP	26	#01 CONT. /0.9M O.C. SPACING